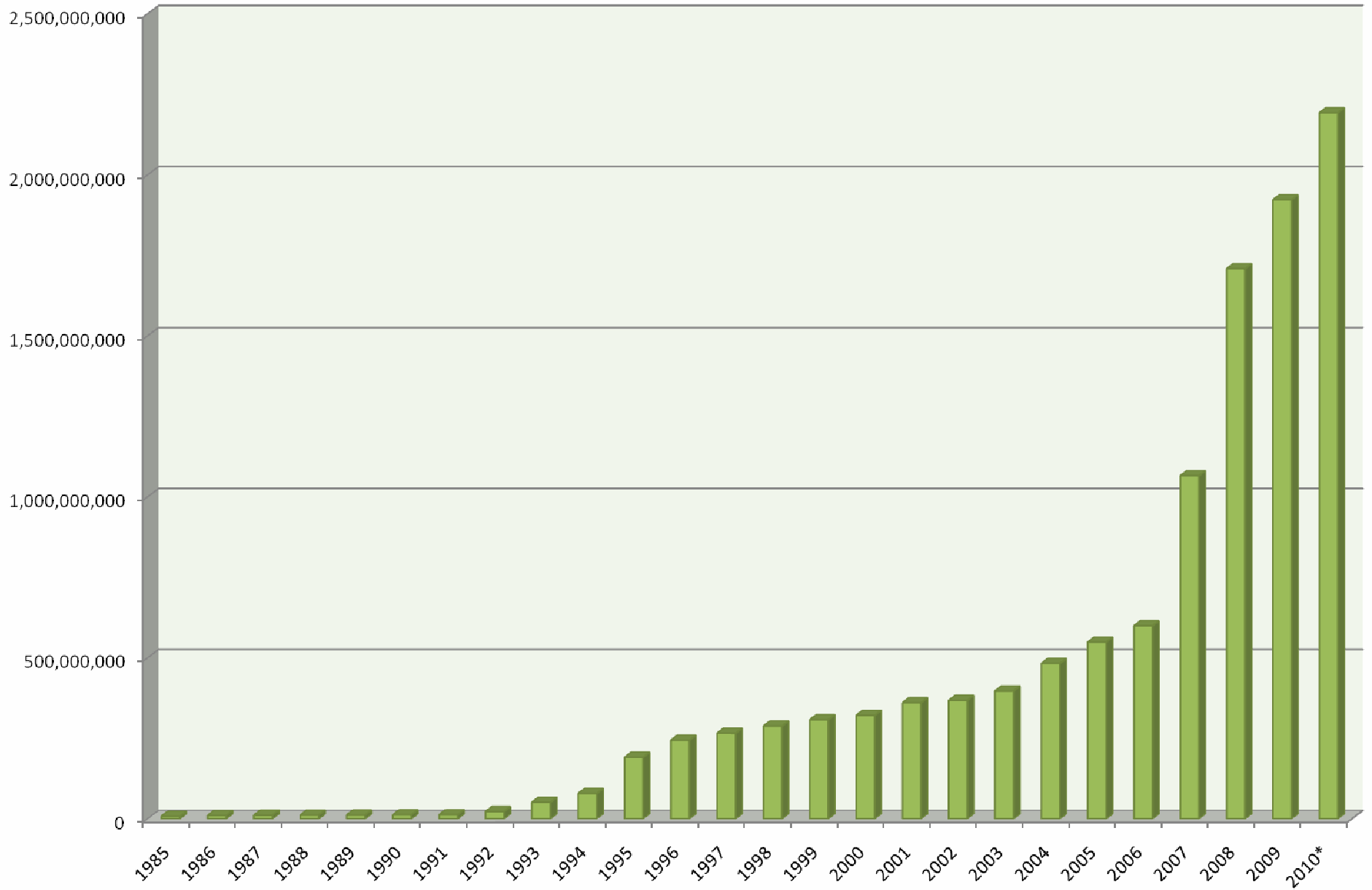


# **2010 ETHANOL INDUSTRY UPDATE**

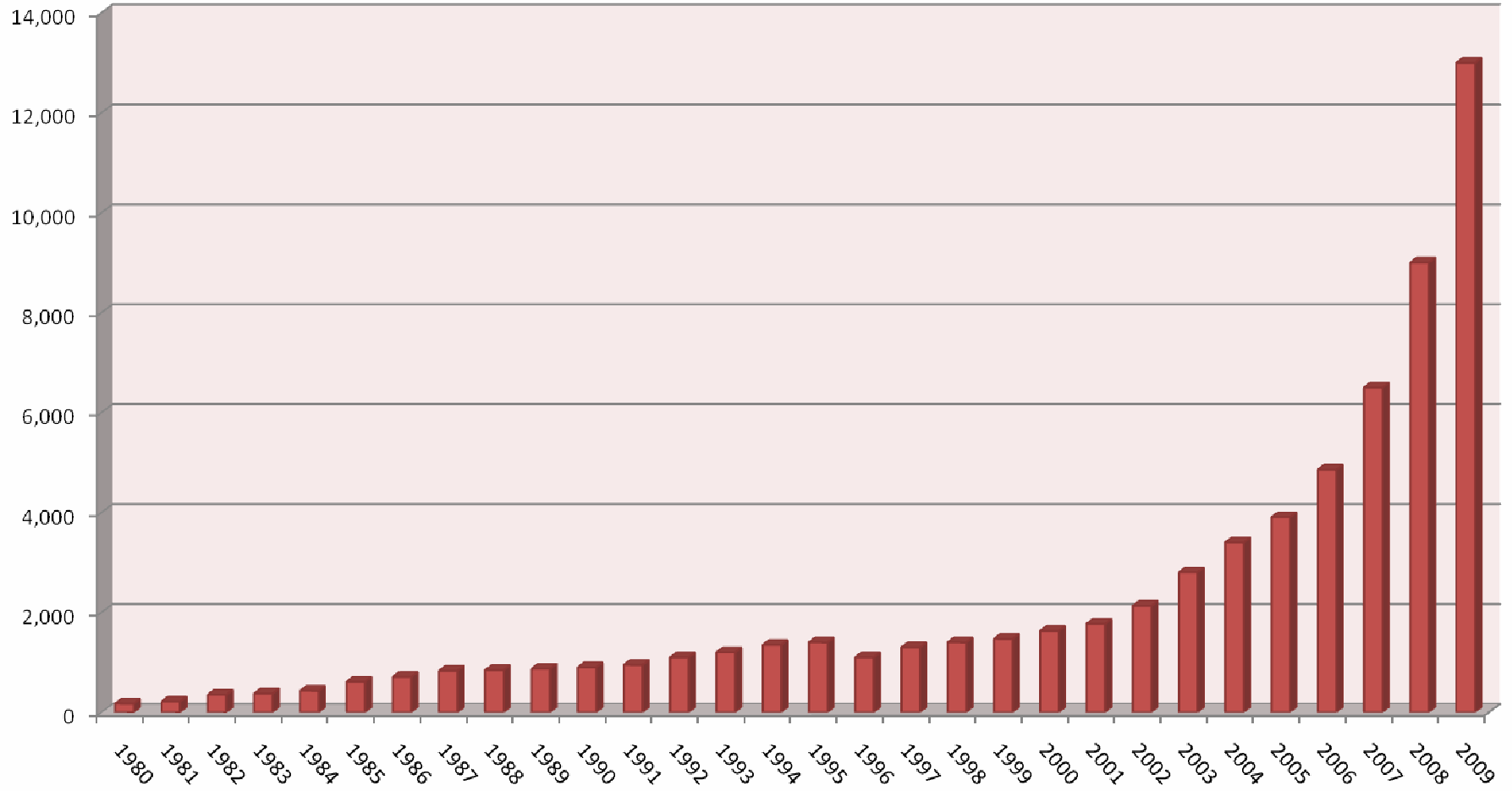
Duane Kristensen  
General Manager  
Chief Ethanol Fuels, Inc.

---

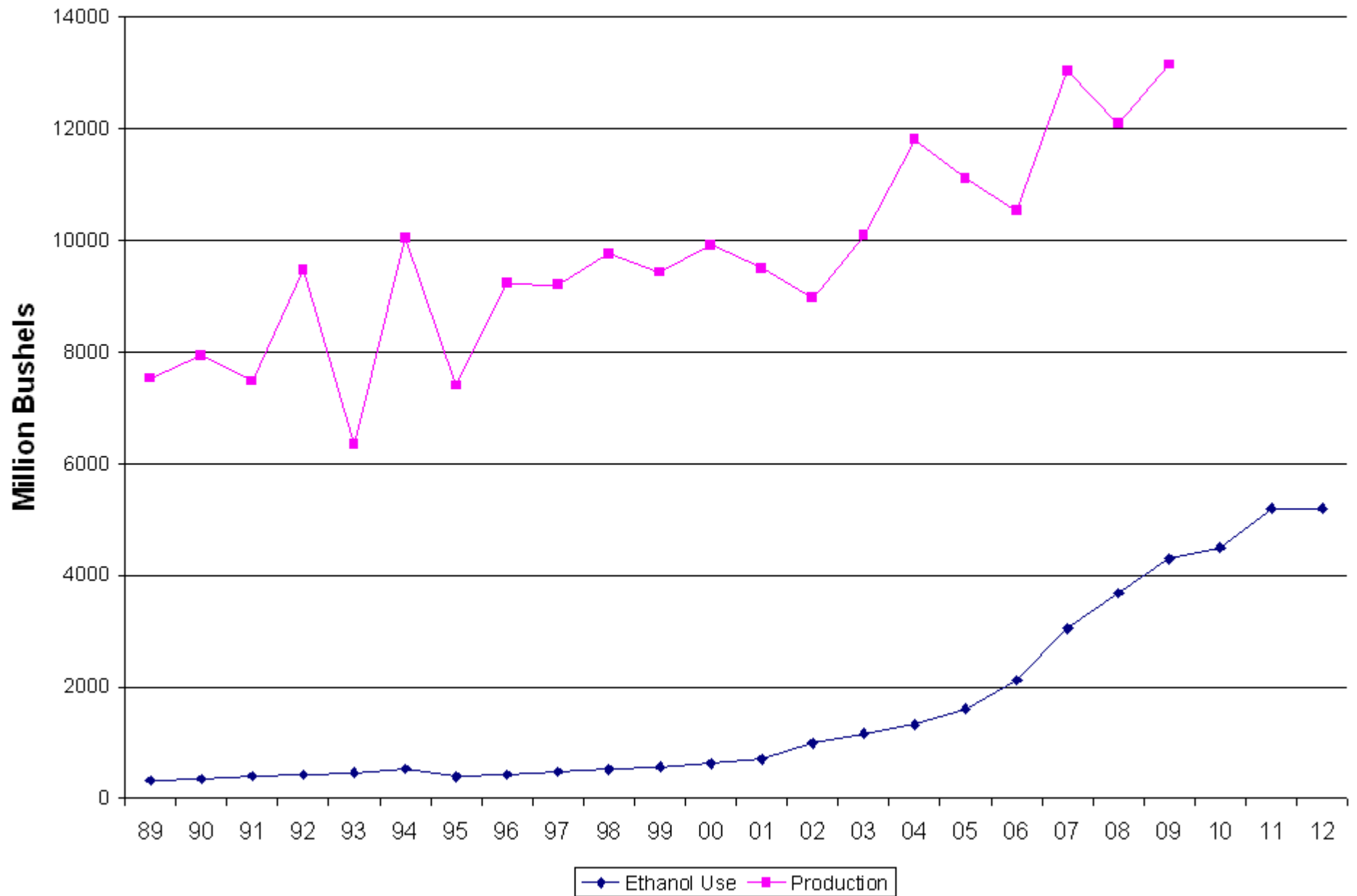
## Nebraska Historical Ethanol Production Capacity (in gallons)



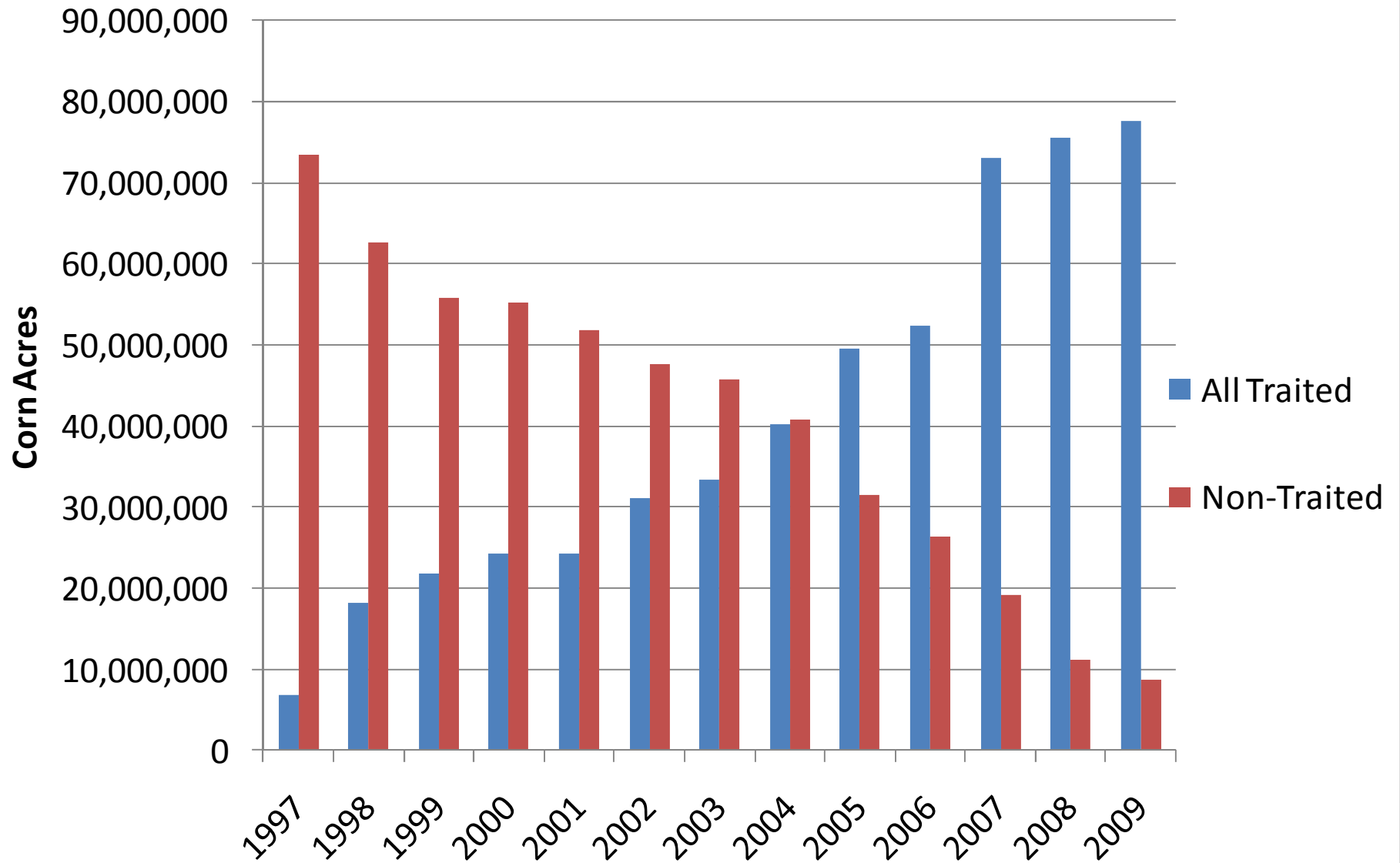
## Historical US Ethanol Production (Million Gallons per Year)



## Corn Production and Use for Ethanol (mln bu)

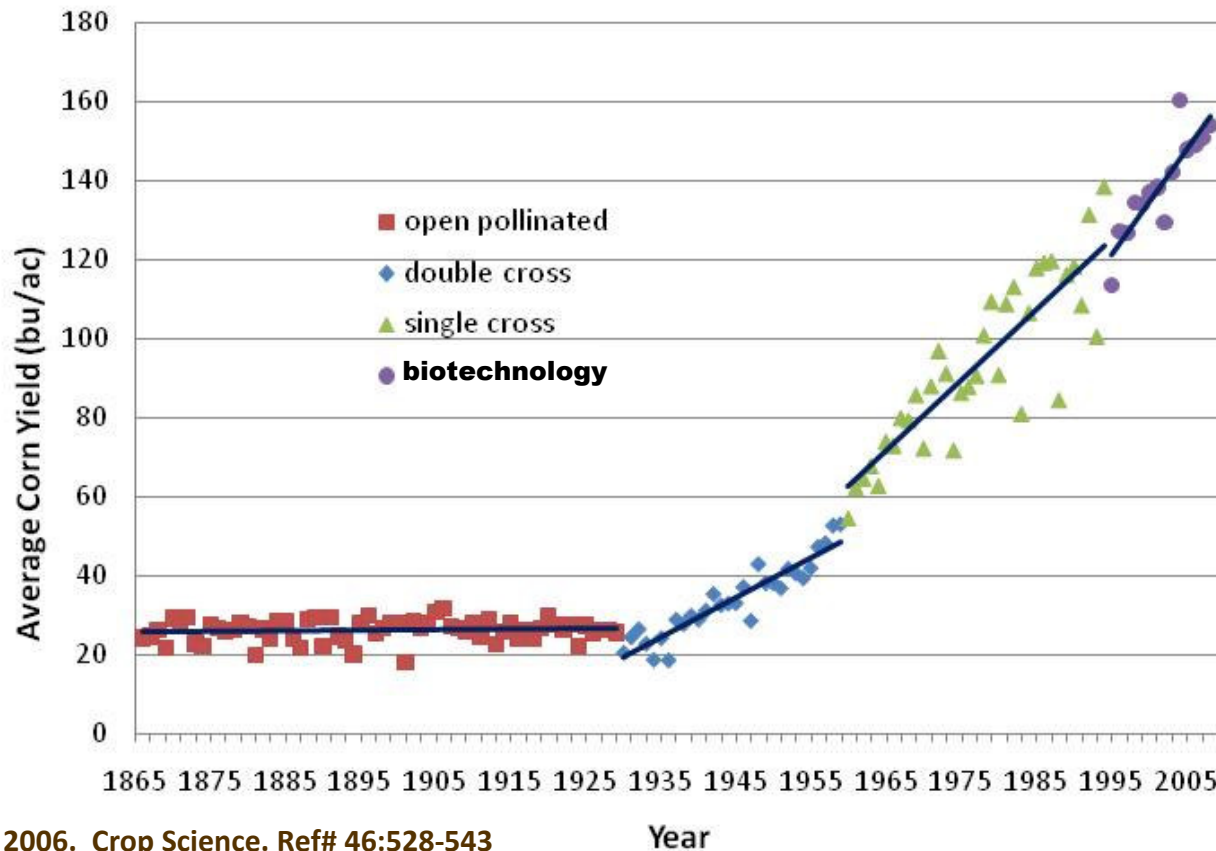


# All Corn Trated and Non-Trated Acres 1997-2009



# The corn yield trend line has shifted

- to date the impact of agronomic practices, breeding and traits



Source: March 2006. Crop Science. Ref# 46:528-543

Consecutive Periods Being Compared	Difference	SE	p-value
Double cross - Open pollinated	0.9901	0.1349	<0.0001
Single cross - Double cross	0.7991	0.1639	<0.0001
Biotech GMO - Single cross	0.8767	0.4163	0.0371

Rate of yield gain is increasing

# Field to Market: Environmental Resource Indicators Report Summary

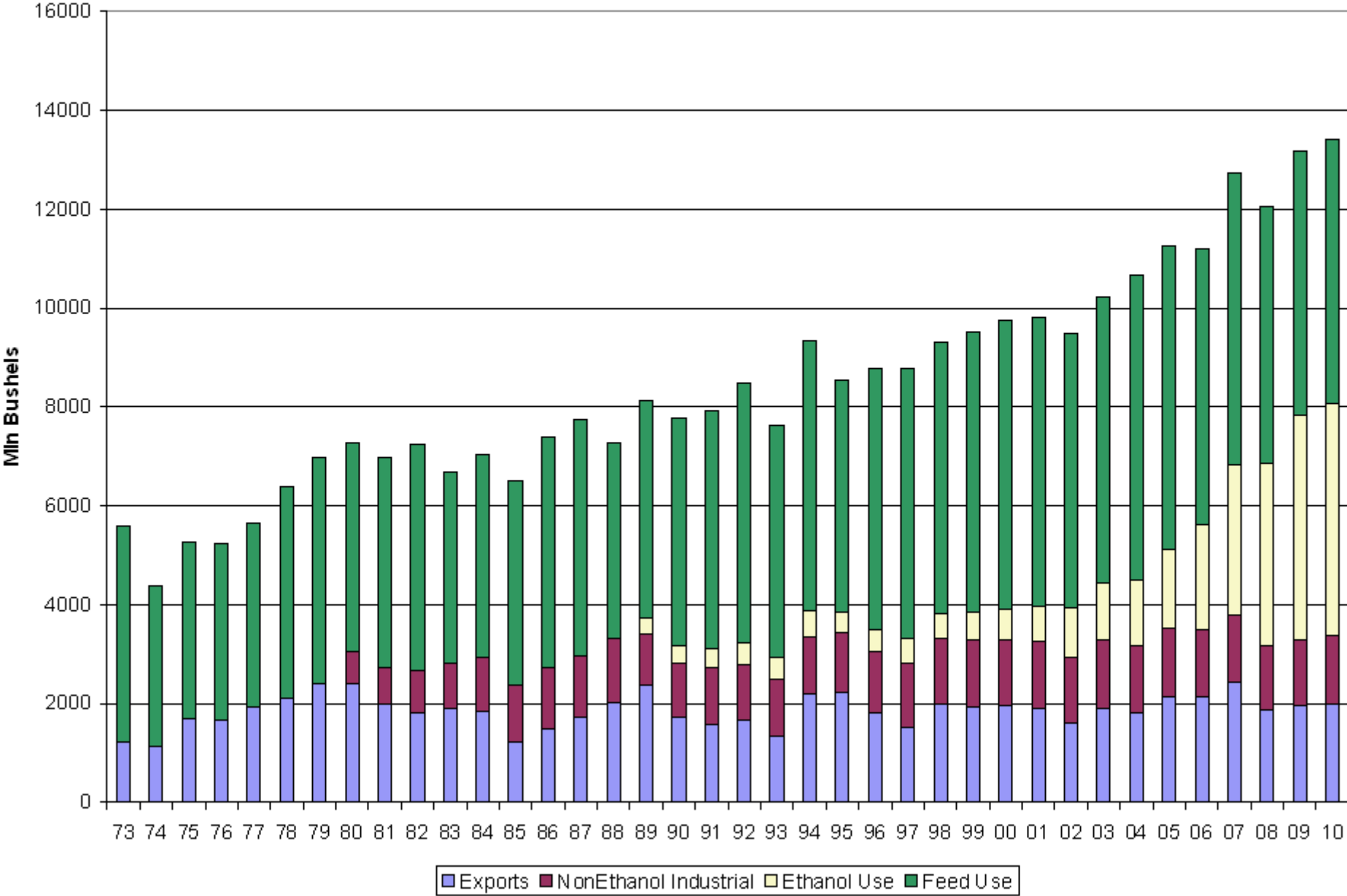


Percent Reduction of Inputs per Unit of Output (1987-2007)<sup>1</sup>

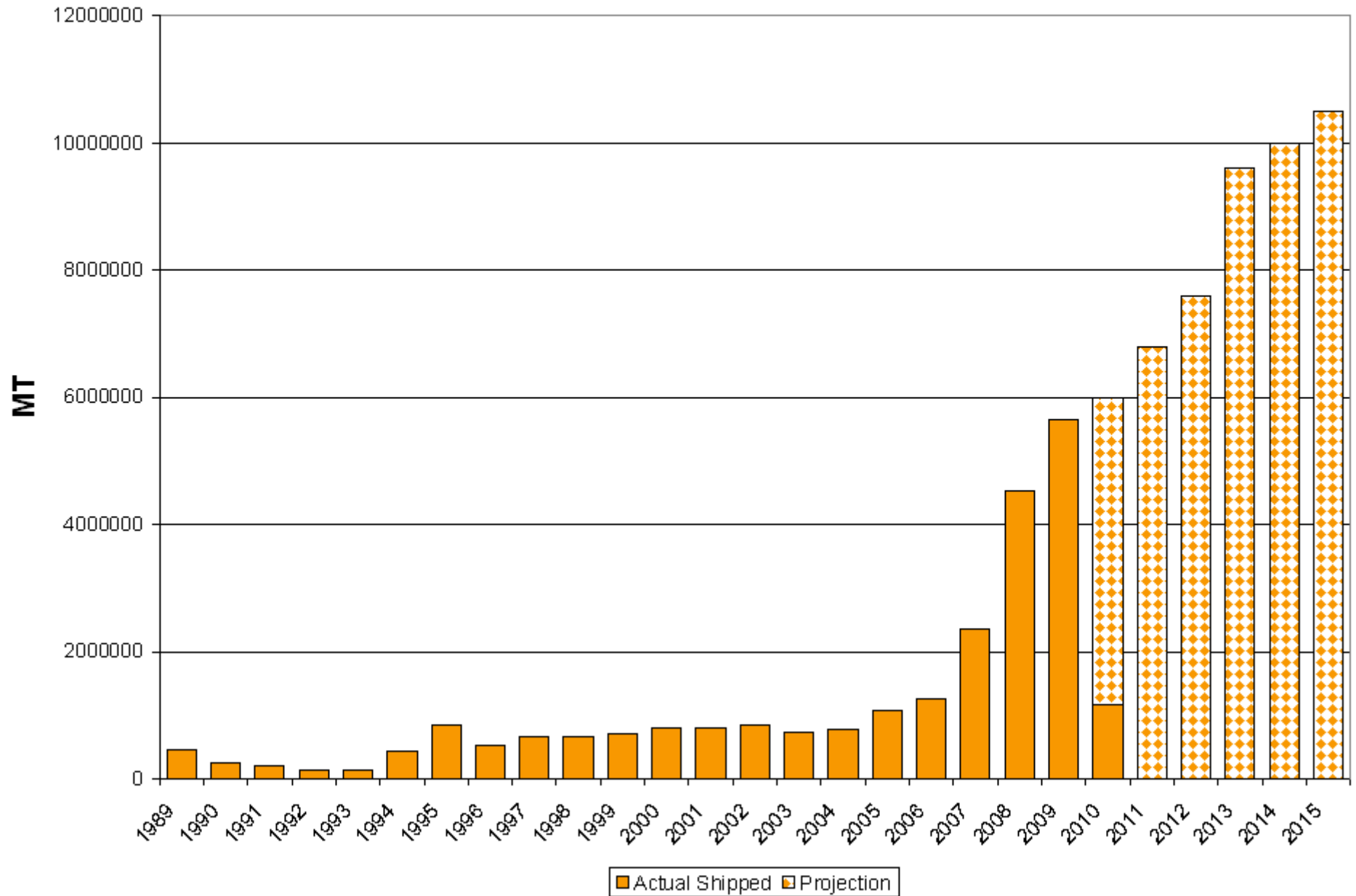
Indicator	Corn	Cotton	Soybeans	Wheat
Land Use	-37%	-25%	-26%	nil
Soil Loss	-69%	-34%	-49%	-50%
Irrigated Water Use	-27%	-49%	-20%	nil
Energy Use	-37%	-66%	-65%	-9%
GHG Emissions	-30%	-33%	-38%	+15%

1/ Indexed to actual values in year 2000

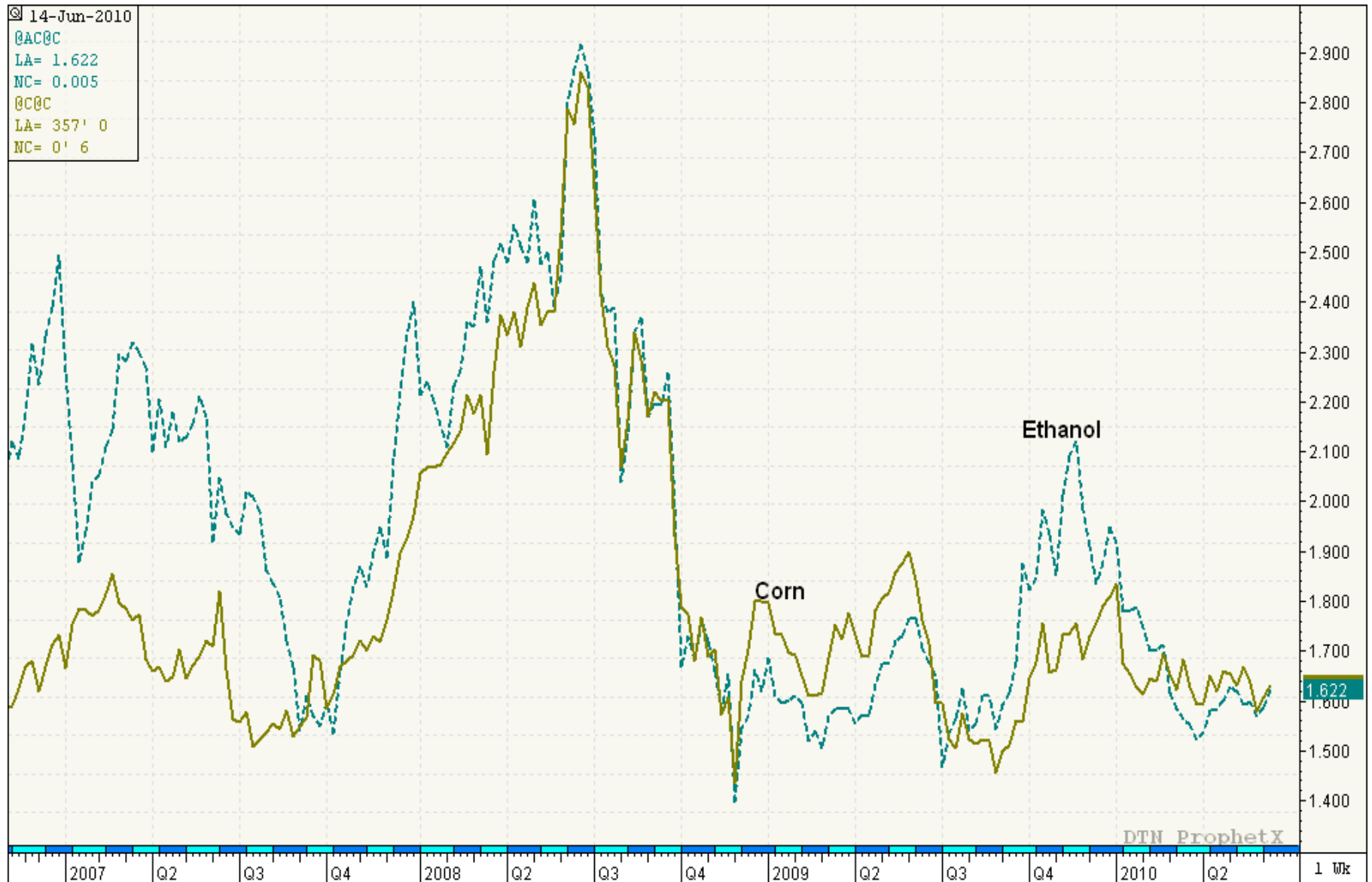
# Corn Usage



# US Census (Brewers, Distillers Grains Exports)



# Corn Ethanol Spread



# Ethanol: Alternative Uses

**WHISKEY  
Tooth Paste!**



**Genuine 6 Proof Stuff  
SCOTCH • BOURBON**

Why fight oral hygiene—enjoy it!  
Here's real he-man toothpaste, best  
argument yet for brushing 3 times a  
day. 2½ oz. tubes flavored with the  
real thing—Scotch or Bourbon.  
Night-before feeling on the morning  
after. Rinse with soda in-  
stead of water if you prefer. **\$1**  
Per tube ppd. . . . .

**Greenland Studios**  
DEPT. HG-114, MIAMI 47, FLORIDA